



4 Percival Road Chatsworth QLD

5 2 8

Welcome to a truly exceptional lifestyle! Instantly be impressed by the sheer size and presence of this stunning two-storey home, set amongst established trees and beautifully landscaped gardens.

Designed for family living and entertaining, this well-appointed home features multiple living areas and covered outdoor spaces, perfect for hosting friends and creating memories. Blissfully surrounded by nature, with picturesque vistas at every turn, this property offers an idyllic, peaceful lifestyle in a highly sought-after location.

The Home:

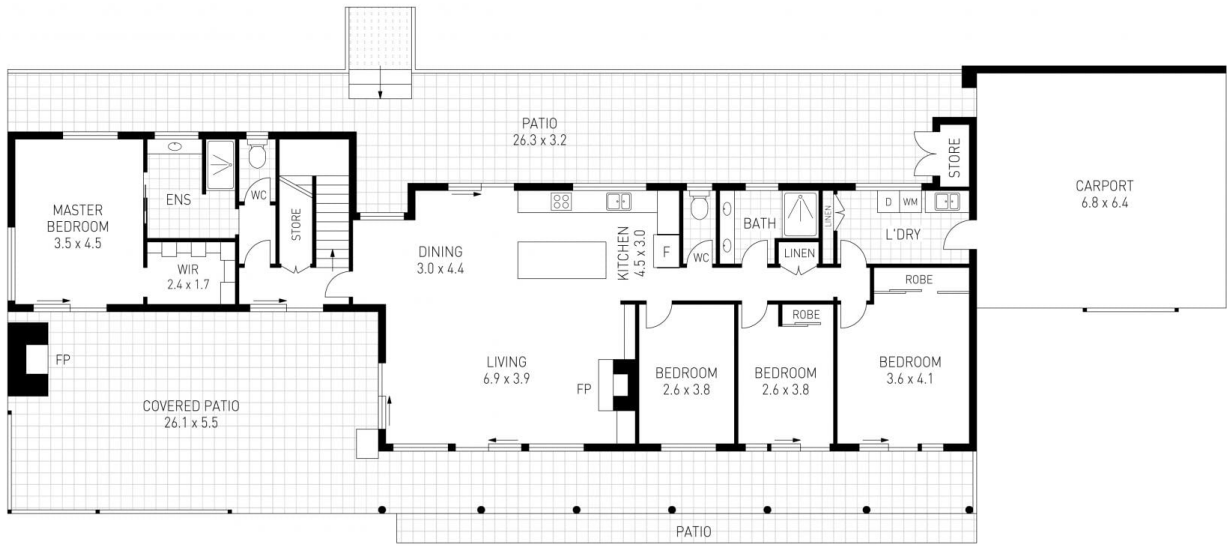
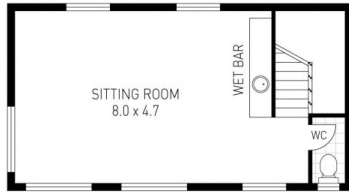
? Two-storey brick construction with new roof and flooring

[For full version visit the website](#)

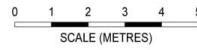
Type : Acreage/Semi-Rural
Price : Offers Over \$1,325,000
Land Size : 5.32 ha
View : <https://www.gympieproperty.com.au/8599690>



Hayley Stephen & Lyle Mutzelburg
0436010444



4 Percival Road



INTERNAL AREA = 211 m²
EXTERNAL AREA = 159 m²
TOTAL AREA = 370 m²

DISCLAIMER : ALL DIMENSIONS ARE AN APPROXIMATION ONLY AND NO GUARANTEE IS GIVEN WITH RESPECT TO ACCURACY.