



22 Sunny View Court Araluen QLD

3 2 5

This elevated, character-filled Queenslander effortlessly blends rustic country charm, contemporary style, and relaxed, earthy vibes. Inside, natural textures, thoughtful finishes, and warm bohemian touches create a welcoming and stylish atmosphere. A detached second bathroom adds convenience and flexibility for modern living.

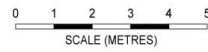
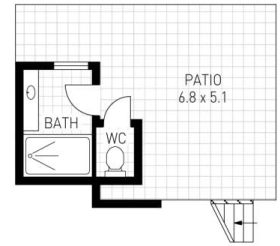
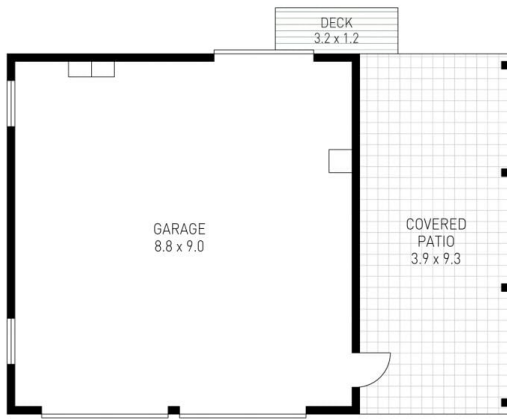
Set on a gently undulating 9050m² block, the property offers a harmonious mix of trees and cleared spaces, a large dam, and a new 9m x 9m shed with additional awning-perfect for hobbies, storage, or vehicles. With ample rainwater storage and room for gardens or entertaining, this home presents a peaceful country lifestyle with style, personality, and endless possibilities.

[For full version visit the website](https://www.gympieproperty.com.au)

Type : Acreage/Semi-Rural
Price : \$ 890,000
Land Size : 9050 sqm
View : <https://www.gympieproperty.com.au/8519055>



Hayley Stephen & Lyle Mutzelburg
0436010444



INTERNAL AREA = 97 m²
EXTERNAL AREA = 38 m²
TOTAL AREA = 135 m²

22 Sunny View Court

DISCLAIMER : ALL DIMENSIONS ARE AN APPROXIMATION ONLY AND NO GUARANTEE IS GIVEN WITH RESPECT TO ACCURACY.